

WOW!





OH YEAH!

THIS AMAZING BARN FIND FEATURES RUSTIC, WARM, WEATHERED LANE PAIRS BUILT FOR SETTling RIVALRIES AND PECKING ORDERS AND CROWNING BARNYARD KINGS. HIDDEN IN PLAIN VIEW NESTLED AWAY IN THIS AMAZING HOME RETREAT. WE CAN HELP YOU DISCOVER YOUR ONE-OF-A-KIND GAMING ROOM. LETS TALK.

NORTHERN MICHIGAN RETREAT

[See the full gallery >](#)



HOLY SMOKE!

READY. SET. GO HOME. HIGH-OCTANE AMUSEMENT FUELED BY SYNC SCORING AND GAMES WILL IGNITE PLENTY OF FRIENDLY COMPETITION ON DUELING LANES, WHICH BEATS BORED GAME NIGHT ANY DAY OF THE WEEK. WE CAN HELP YOU FAST-TRACK YOUR OWN CUSTOM GAMING ROOM. LETS GET THE CONVERSATION STARTED.

NEXT LEVEL RECREATION ROOM

[See the full gallery >](#)



CHEERS!

BUILT FOR BRINGING FAMILY AND MATES TOGETHER FOR A GOOD BOWLING MATCH, A FEW PINTS AND SOME FRIENDLY SLAGGING. HOW LUCKY CAN YOU BE TO HAVE YOUR OWN 10-PIN PUB BUILT IN YOUR VERY OWN HOME? WE CAN PASS ON THE SAME LUCK TO YOU AND HELP YOU BUILD YOUR OWN CUSTOM GAME ROOM. LETS GET THE BALL ROLLING.

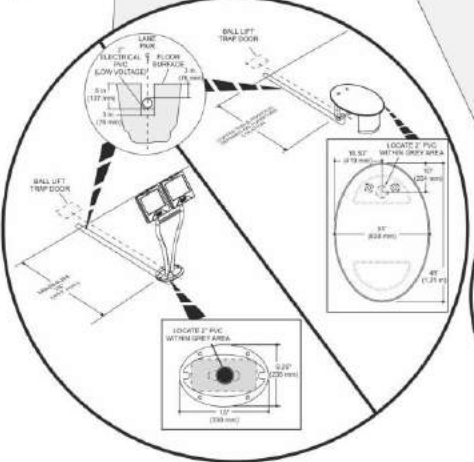
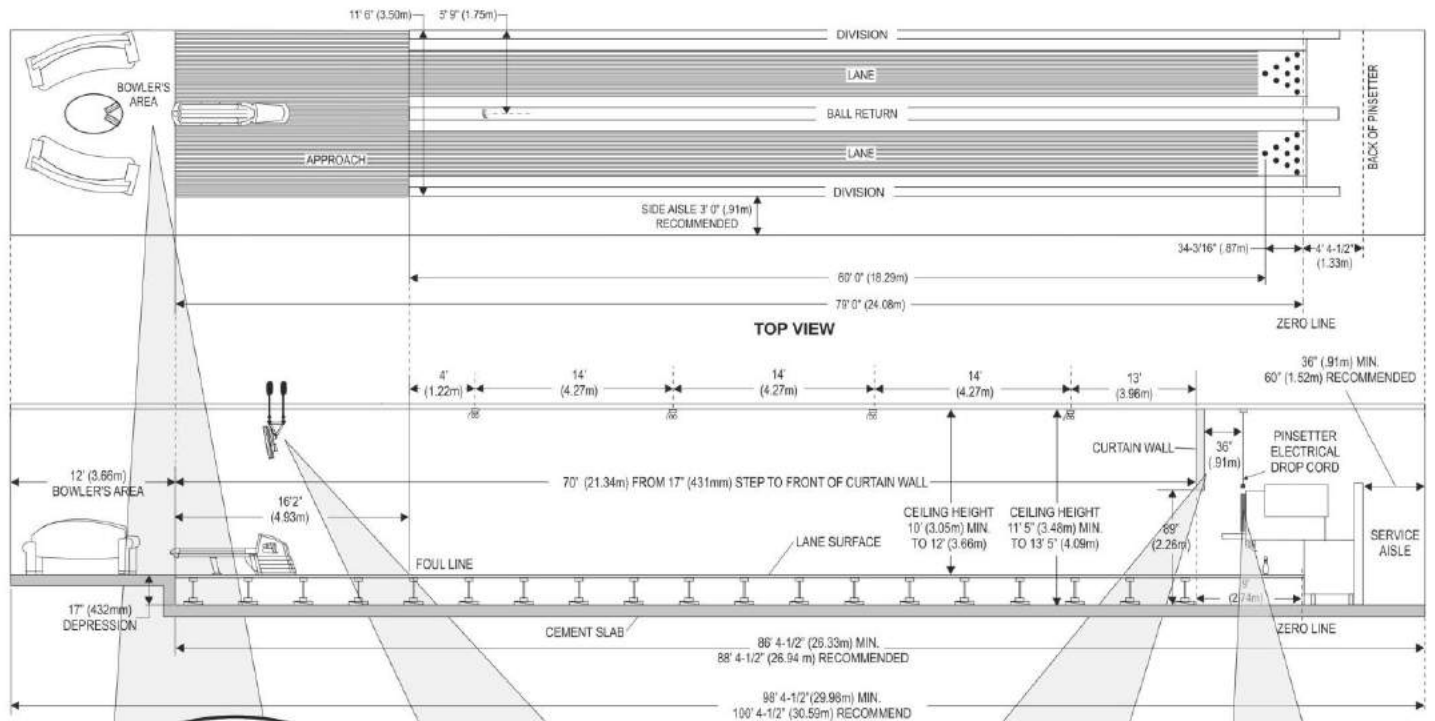
THE DUBLIN

[See the full gallery >](#)

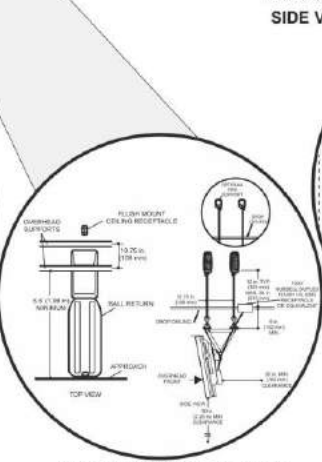


WE DO IT ALL, AND WE DO IT WELL!

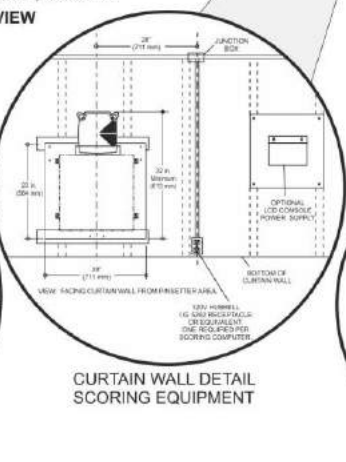
HOST THE ULTIMATE GAME NIGHT IN YOUR VERY OWN HOME BOWLING CENTER. CUSTOMIZATION OPTIONS ARE LIMITED ONLY BY YOUR IMAGINATION. BRUNSWICK IS THE NAME THAT MADE THE GAME; BRINGING THE LEGENDARY HERITAGE, LUXURY CRAFTSMANSHIP, AND ATTENTION TO DETAIL TO YOUR OWN HOME THAT LOOKS GREAT AND FUNCTIONS RELIABLY FOR YEARS TO COME. WE'LL HELP YOU BUILD A SPACE THAT DELIVERS THE ULTIMATE WOW FACTOR AND REFLECTS YOUR STYLE AND TASTE. WE'D LOVE TO HAVE A CONVERSATION WITH YOU TO FIND OUT MORE ABOUT YOUR VISION. GIVE US A CALL (800) 937-2695.



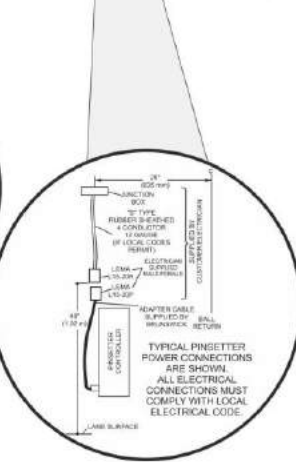
SCORING LOW VOLTAGE CONDUIT



OVERHEAD VIDEO DISPLAY SUPPORT SPECIFICATIONS



CURTAIN WALL DETAIL SCORING EQUIPMENT



PINSETTER POWER CONNECTION

Brunswick Residential Planning Guide

Site Requirements

Concrete Floor
Bowling lanes are installed on a waterproof, reinforced concrete slab poured over compacted fill. In the lane area, the surface must be level to within 1/2" (1.27cm).

A 17" (43.2cm) depression for the lanes is required for a flush installation to the bowlers' area.

The concrete floor in the bowlers' area should be thick enough to accept a 2-1/2" (64mm) anchor for seating and other related equipment.

Entrance Requirements
A 6' 0" (182.88cm) wide x 6' 8" (203.2cm) high entrance or an opening in a side is required to bring equipment into the building. The entrance should be located toward the front area of the bowling lanes.

Unloading Area
An unloading area adjacent to the job site is required for receiving the equipment.

Storage Space
In addition to the bowling area, an adequate area must be provided for the storage of tools, foundation materials, lane panels, and other equipment. This area should be secure, dry, and clear of all other trades.

Electrical Power
At the time of installation, electrical power is required for suitable illumination and the use of power tools.

Temperature and Humidity Control
A continuous controlled atmosphere must be maintained prior to the delivery of any bowling materials to the job site. A relative humidity level of 40 to 50% must be maintained at a comfortable temperature level. This is to insure optimum performance and reliability for all equipment.

Electrical Requirements

Scoring Electrical Requirements
The customer is required to provide an isolated ground (IG) electrical sub-panel with an isolated neutral and ground buss, which is solely dedicated to the electronic scoring systems.

Pinsetter Electrical Requirements
GS Pinsetters require 240VAC three phase power @ 12amps.

Note: Most residences do not have three phase power. If 3 phase is not available, a rotary phase generator will be required to add the third phase of power. The following are recommend models and sources for rotary phase converters:

STEELMAN: Model R-2/4-240-LD
Steelman Industries, Inc.
930-984-3061
www.steelman.com

PHASE-A-MATIC: Model R-2
Phase-A-Matic, Inc.
800-962-6976
www.phase-a-matic.com

PHASEMASTER: Model MA-00
Kay Industries
800-348-5257
www.kayind.com



Reduced lane lengths can be customized to t your space. If your space wont accommodate regulation-length lanes (as illustrated here), consider Duckpin Bowling.

EXPERIENCE IS EVERYTHING **Brunswick**[®]

Experience is Everything.

EXCLUSIVE DISTRIBUTORS FOR INDIA

CSML

We make fun, a business...

Take a look at our residential gallery and you'll see why Brunswick is the #1 residential bowling company.
Email us at sales@csmlindia.com or call 91-22-28302166/49739659 | www.csmlindia.com